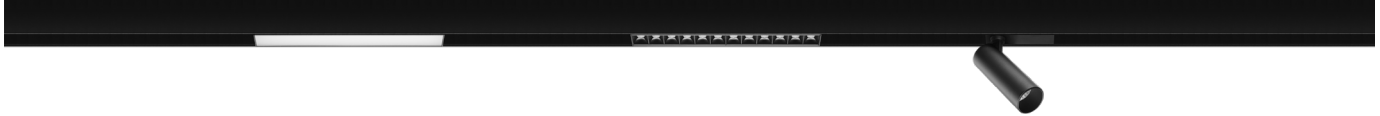


Project:	Type:
Date:	Comments:



Creative and flexible architectural solution. Recessed, surface mount, and pendant tracks are made from high grade aluminum extrusions and are field cuttable. Light components, ranging from solid linear, louvre, wall washer to adjustable spotlights and pendant cylinders snap in the track magnetically and can be repositioned by hand, without tools. Great for interior retail, hospitality, office, and residential applications.

- IP20 - Indoor
- 24V DC
- Remote Driver
- 0-10V/Dali Dimming
- 5-Year Limited Warranty
- Osram/Cree LED Chips
- High Grade Aluminum Extrusion Track
- Recessed (mud-in), Surface Mount, Pendant

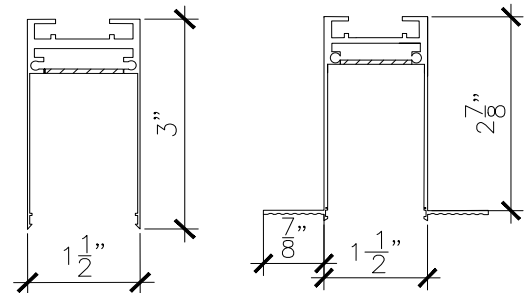


## TRACK



## DIMENSIONS

Product ID	Installation	Finish	Length
TECHOLED-MT-R	Recessed	Black/White	39.25"/78.62"/118"
TECHOLED-MT-SM	Surface Mount	Black/White	39.25"/78.62"/118"
TECHOLED-MT-P	Pendant	Black/White	39.25"/78.62"/118"
TECHOLED-MT-RP	No-Trim Recessed	Black/White	39.25"/78.62"/118"



## Ordering Guide



### 1-FIXTURE ID

TECHOLED - MT - Magnetic Track

### 2-INSTALLATION

R - Recessed  
SM - Surface Mount P - Pendant  
RP - No-Trim Recessed (mud in)

### 3-FINISH

B - Black  
W - White  
C - Custom

### 4-LENGTH

39 - 39.25"  
78 - 78.62"  
118 - 118"  
C - Custom  
\* Field Cuttable

Project:	Type:
Date:	Comments:

LOUVRE LINEAR MODULE



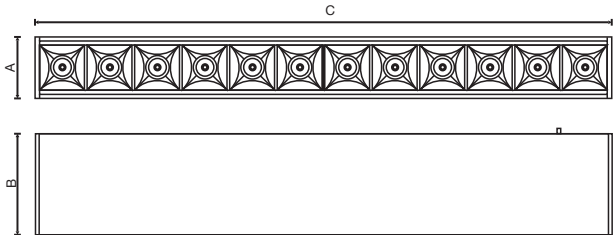
Concealed, Accented Light Source

- Aluminum Construction
- Osram LED Chips
- 12°/34°/48° Beam Angle Options



DIMENSIONS

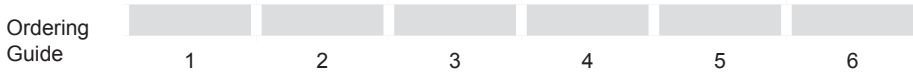
Product ID	A	B	C
TECHOLED-MT-LL-4	2.16"	1.33"	3.28"
TECHOLED-MT-LL-8	2.16"	1.33"	6.43"
TECHOLED-MT-LL-16	2.16"	1.33"	12.71"



Product ID	LED Chips	Wattage	Lumen Output	Beam Angle	CRI	CCT	Finish	Size (inches)	Dimming
TECHOLED-MT-LL-4	Osram	4W	320lm	12°/34°/48°	90+	2700-5000K	Black/White	2.16x1.33x3.28"	0-10V/Dali
TECHOLED-MT-LL-8	Osram	8W	640lm	12°/34°/48°	90+	2700-5000K	Black/White	2.16x1.33x6.43"	0-10V/Dali
TECHOLED-MT-LL-16	Osram	16W	1280lm	12°/34°/48°	90+	2700-5000K	Black/White	2.16x1.33x12.71"	0-10V/Dali

Project:	Type:
Date:	Comments:

LOUVRE LINEAR MODULE



1-FIXTURE ID	2-WATTAGE	3-BEAM ANGLE	4-COLOR TEMPERATURE	5-FINISH
TECHOLED-MT-LL - Linear Louvre Module	4 - 4W 8 - 8W 16 - 16W	12 - 12° 34 - 34° 48 - 48°	27 - 2700K 30 - 3000K 35 - 3500K 40 - 4000K 50 - 5000K D - Dynamic/Tunable White	B - Black W - White C - Custom

6-DIMMING
N - None D - 0-10V Dimming D1% - 0-10V Dimming to 1% DA - Dali

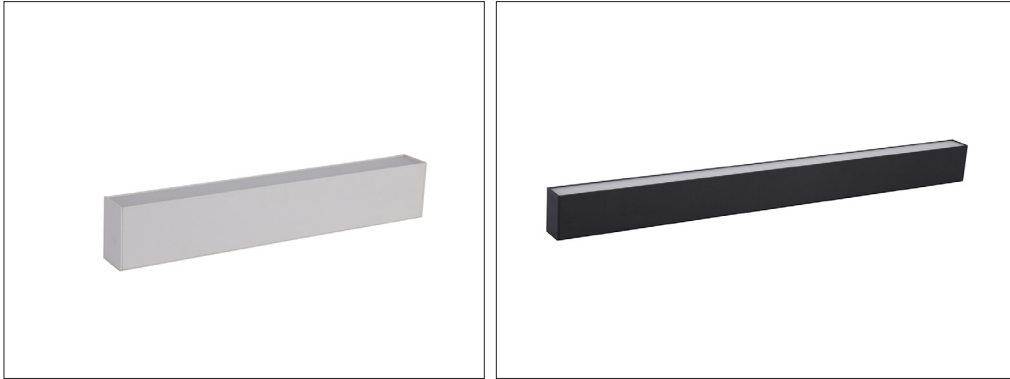
Project:	Type:
Date:	Comments:

SOLID LINEAR MODULE



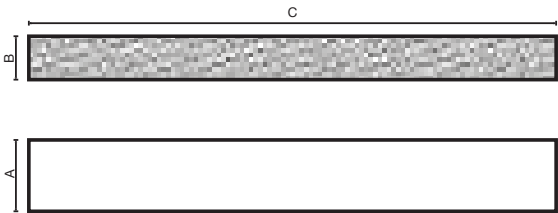
Smooth, Clear General Lighting

- Aluminum Construction
- Osram LED Chips
- 110° Beam Angle



DIMENSIONS

Product ID	A	B	C
TECHOLED-MT-SL-13	2.12"	1.33"	12.6"
TECHOLED-MT-SL-26	2.12"	1.33"	25.19"
TECHOLED-MT-SL-39	2.12"	1.33"	37.71"



Product ID	LED Chips	Wattage	Lumen Output	Beam Angle	CRI	CCT	Finish	Size (inches)	Dimming
TECHOLED-MT-SL-13	Osram	13W	780lm	110°	90+	2700-5000K	Black/White	2.12x1.33x12.6"	0-10V/Dali
TECHOLED-MT-SL-26	Osram	26W	1600lm	110°	90+	2700-5000K	Black/White	2.12x1.33x25.19"	0-10V/Dali
TECHOLED-MT-SL-39	Osram	39W	2500lm	110°	90+	2700-5000K	Black/White	2.12x1.33x37.71"	0-10V/Dali

Project:	Type:
Date:	Comments:

SOLID LINEAR MODULE

Ordering Guide

1

2

3

4

5

1-FIXTURE ID

TECHOLED-MT-SL  
- Solid Linear  
Module

2-WATTAGE

13 - 13W  
26 - 26W  
39 - 39W

3-COLOR TEMPERATURE

27 - 2700K  
30 - 3000K  
35 - 3500K  
40 - 4000K  
50 - 5000K  
D - Dynamic/Tunable White

4-FINISH

B - Black  
W - White  
C - Custom

5-DIMMING

N - None  
D - 0-10V dimming  
D1% - 0-10V Dimming to 1%  
DA - Dali

Project:	Type:
Date:	Comments:

WALL WASHER LINEAR MODULE



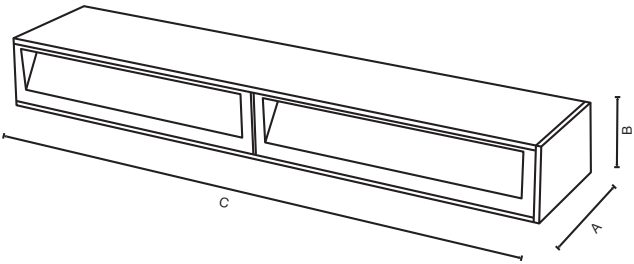
Even light to illuminate vertical surfaces

- Aluminum Construction
- Osram LED Chips



DIMENSIONS

Product ID	A	B	C
TECHOLED-MT-WW-8-30-W-D	2.18"	1.33"	5.43"
TECHOLED-MT-WW-16-30-W-D	2.18"	1.33"	10.62"
TECHOLED-MT-WW-24-30-W-D	2.18"	1.33"	10.62"



Product ID	LED Chips	Wattage	Lumen Output	CRI	CCT	Finish	Size (inches)	Dimming
TECHOLED-MT-WW-8	Osram	8W	400lm	90+	2700-5000K	Black/White	2.18x1.33x5.43"	0-10V/Dali
TECHOLED-MT-WW-16	Osram	16W	800lm	90+	2700-5000K	Black/White	2.18x1.33x10.62"	0-10V/Dali
TECHOLED-MT-WW-24	Osram	24W	1200lm	90+	2700-5000K	Black/White	2.18x1.33x10.62"	0-10V/Dali

Project:	Type:
Date:	Comments:

WALL WASHER LINEAR MODULE

Ordering Guide

1

2

3

4

5

1-FIXTURE ID	2-WATTAGE	3-COLOR TEMPERATURE	4-FINISH	5-DIMMING
TECHOLED-MT-WW - Linear Wall Wash Module	8 - 8W 16 - 16W	27 - 2700K 30 - 3000K 35 - 3500K 40 - 4000K 50 - 5000K D - Dynamic/Tunable White	B - Black W - White C - Custom	N - None D - 0-10V dimming D1% - 0-10V Dimming to 1% DA - Dali

Project:	Type:
Date:	Comments:

ADJUSTABLE SPOTLIGHT MODULE

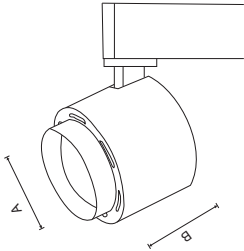


- Aluminum Construction
- Cree LED Chips
- Multiple Beam Angle Options



DIMENSIONS

Product ID	A	B
TECHOLED-MT-SLS-5	1.37"	3.14"
TECHOLED-MT-SLD-10 (double)	1.37"	3.14"
TECHOLED-MT-S-10	1.96"	5.5"
TECHOLED-MT-SS-8	2.55"	3.14"
TECHOLED-MT-SS-15	3.62"	3.14"



Product ID	LED Chips	Wattage	Lumen Output	Beam Angle	CRI	CCT	Finish	Size (inches)	Dimming
TECHOLED-MT-SLS-5	CREE	5W	400lm	20°/30°/40°	90+	2700-5000K	Black/White	1.37x3.14"	0-10V/Dali
TECHOLED-MT-SLD-10 (double)	CREE	10W (2x5W)	800lm	20°/30°/40°	90+	2700-5000K	Black/White	1.37x3.14"	0-10V/Dali
TECHOLED-MT-S-10	CREE	10W	650lm	18°/24°/36°	90+	2700-5000K	Black/White	1.96x5.5"	0-10V/Dali
TECHOLED-MT-SS-8	CREE	8W	520lm	10°/20°/30°	90+	2700-5000K	Black/White	2.55x3.14"	0-10V/Dali
TECHOLED-MT-SS-15	CREE	15W	975lm	10°/20°/30°	90+	2700-5000K	Black/White	3.62x3.14"	0-10V/Dali



Project:	Type:
Date:	Comments:

ADJUSTABLE SPOTLIGHT MODULE

Ordering Guide

123456

1-FIXTURE ID	2-WATTAGE	3-BEAM ANGLE	4-COLOR TEMPERATURE
TECHOLED-MT-SLS - Spotlight, small	5 - 5W (SLS Model)	10 - 10° (SS models)	27 - 2700K
TECHOLED-MT-SLD - Spotlight, small, double	8 - 8W (SS Models)	18 - 18° (S Model)	30 - 3000K
TECHOLED-MT-S - Spotlight	10 - 10W (SLD & S Models)	20 - 20° (SLS, SLD & SS Models)	35 - 3500K
TECHOLED-MT-SS - Spotlight, short	15 - 15W (SS Models)	24 - 24° (S Model)	40 - 4000K
		30 - 30° (SLS, SLD & SS Models)	50 - 5000K
		40 - 40° (SLS & SLD Models)	D - Dynamic/Tunable White
5-FINISH	6-DIMMING		
B - Black	N - None		
W - White	D - 0-10V dimming		
C - Custom	D1% - 0-10V Dimming to 1%		
	DA - Dali		

Project:	Type:
Date:	Comments:

## ADJUSTABLE LINEAR MODULE



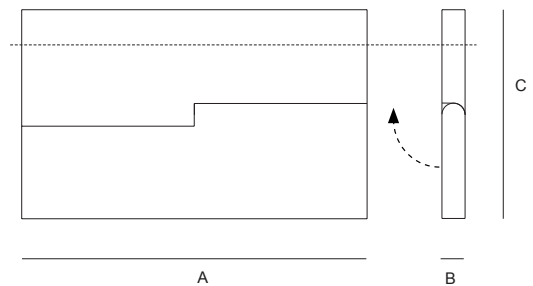
Foldable Linear Module, For Concealed, General and Wall Washer Applications

- Aluminum Construction
- Osram LED Chips
- Solid and Louvre Diffusion - 110° Beam Angle on Solid; 12°/34°/48° Beam Angle Options on Louvre



## DIMENSIONS

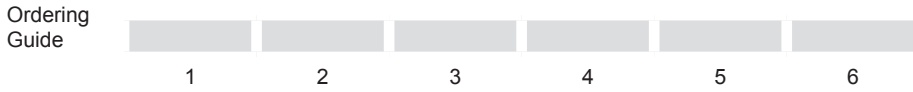
Product ID	A	B	C
TECHOLED-MT-AL-L-4	3.30"	1.33"	7.12"
TECHOLED-MT-AL-L-8	6.1"	1.33"	7.12"
TECHOLED-MT-AL-L-16	12.6"	1.33"	7.12"
TECHOLED-MT-AL-S-4	3.30"	1.33"	7.12"
TECHOLED-MT-AL-S-8	6.41"	1.33"	7.12"
TECHOLED-MT-AL-S-16	12.6"	1.33"	7.12"



Product ID	LED Chips	Wattage	Lumen Output	Beam Angle	CRI	CCT	Finish	Size (inches)	Dimming
TECHOLED-MT-AL-L-4	Osram	4W	320lm	12°/34°/48°	90+	2700-5000K	Black/White	3.30x1.33x7.12"	0-10V/Dali
TECHOLED-MT-AL-L-8	Osram	8W	640lm	12°/34°/48°	90+	2700-5000K	Black/White	6.41x1.33x7.12"	0-10V/Dali
TECHOLED-MT-AL-L-16	Osram	16W	1280lm	12°/34°/48°	90+	2700-5000K	Black/White	12.6x1.33x7.12"	0-10V/Dali
TECHOLED-MT-AL-S-4	Osram	4W	240lm	110°	90+	2700-5000K	Black/White	3.30x1.33x7.12"	0-10V/Dali
TECHOLED-MT-AL-S-8	Osram	8W	480lm	110°	90+	2700-5000K	Black/White	6.4x1.33x7.12"	0-10V/Dali
TECHOLED-MT-AL-S-16	Osram	16W	960lm	110°	90+	2700-5000K	Black/White	12.6x1.33x7.12"	0-10V/Dali

Project:	Type:
Date:	Comments:

ADJUSTABLE LINEAR MODULE



1-FIXTURE ID	2-WATTAGE	3-BEAM ANGLE	4-COLOR TEMPERATURE	5-FINISH
TECHOLED-MT-AL-L - Adjustable Linear Module, Louvre	4 - 4W 8 - 8W 14 - 14W	12 - 12° 34 - 34° 48 - 48°	27 - 2700K 30 - 3000K 35 - 3500K 40 - 4000K 50 - 5000K D - Dynamic/Tunable White	B - Black W - White C - Custom
TECHOLED-MT-AL-S -Adjustable Linear Module, Solid		Solid 110 - 110°		

- 6-DIMMING
- N - None
  - D - 0-10V dimming
  - D1% - 0-10V
  - Dimming to 1%DA -
  - Dali

Project:	Type:
Date:	Comments:

PENDANT CYLINDER MODULES

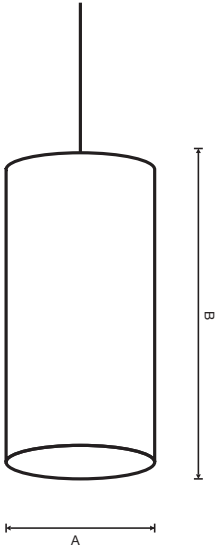


Decorative Architectural Look



DIMENSIONS

Product ID	A	B
TECHOLED-MT-PC-5	1.37"	9.48"
TECHOLED-MT-PC-10	1.96"	9.48"



Product ID	LED Chips	Wattage	Lumen Output	Beam Angle	CRI	Finish	Size (inches)	Dimming
TECHOLED-MT-PC-5	Cree	5W	325lm	18°/24°/36°	90+	Black/White	1.37x9.48"	0-10V/Dali
TECHOLED-MT-PC-10	Cree	10W	650lm	20°/30°/40°	90+	Black/White	1.96x9.48"	0-10V/Dali

Project:	Type:
Date:	Comments:

PENDANT CYLINDER MODULE

Ordering Guide

1

2

3

4

5

6

1-FIXTURE ID	2-WATTAGE	3-BEAM ANGLE	4-COLOR TEMPERATURE	5-FINISH
TECHOLED-MT-PC - Pendant Cylinder Module	5 - 5W 10 - 10W	5W model: 18 - 18° 24 - 24° 36 - 36°  10W model: 20 - 20° 30 - 30° 40 - 40°	27 - 2700K 30 - 3000K 35 - 3500K 40 - 4000K 50 - 5000K D - Dynamic/Tunable White	B - Black W - White C - Custom

6-DIMMING

N - None  
D - 0-10V dimming  
D1% - 0-10V Dimming to 1%  
DA - Dali

Project:	Type:
Date:	Comments:

ACCESSORIES



TECHOLED-MT-45DCORNER

4.33X4.33"

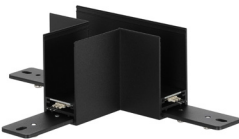
45° sharp corner, for pendant/surface mount and recessed installation



TECHOLED-MT-XCORNER

5.07x3.89"

X corner for pendant/surface mount and recessed installation



TECHOLED-MT-TCORNER

5.07x6.25"

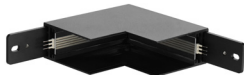
T corner for pendant/surface mount and recessed installation



TECHOLED-MT-LCORNER

3.54x3.54x2.99"

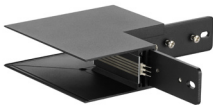
L corner for pendant/surface mount and recessed installation



TECHOLED-MT-INNCORNER

4.84x4.94x2.99"

inner corner for recessed and surface mount installation



TECHOLED-MT-OUTERCORNER

4.84x4.94x2.99"

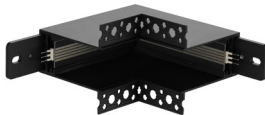
outer corner for recessed and surface mount installation



TECHOLED-MT-R-LCORNER

3.54x3.54x2.99"

L corner for recessed mud-in installation



TECHOLED-MT-R-INNCORNER

4.84x4.84x2.99"

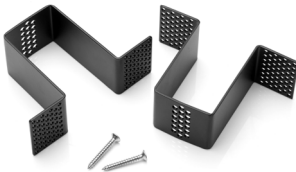
inner corner for recessed mud-in installation



TECHOLED-MT-R-OUTCORNER

4.84x4.84x2.99"

outer corner for recessed mud-in installation



TECHOLED-MT-RK

3.93x1.49x2.63"

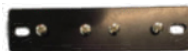
recessed flange kit



TECHOLED-MT-PK

3.14" diameter

pendant kit



TECHOLED-MT-TC

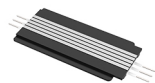
4.44x1.27x0.11"

continuous linear run connector

As we continue to innovate and improve our products, we reserve the right to edit, modify, and change our technical documentation.

Project:	Type:
Date:	Comments:

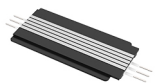
ACCESSORIES



TECHOLED-MT-PP

2.55x1.18"

power plate, with 2 pin connection



TECHOLED-MT-DP

2.55x1.18"

decorative plate



TECHOLED-MT-EC

2.99x1.53x0.05"

end cap



TECHOLED-MT-BC

field cuttabl

black insert module