

Project:	Type:
Date:	Comments:

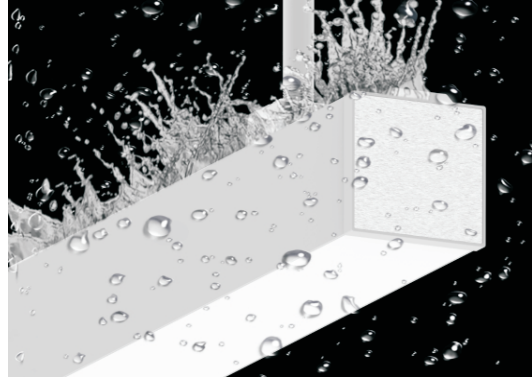
GENERAL: Outdoor Architectural LED Fixture. Pendant, Surface, Wall Mounted & Recessed Installations. Connectivity to Create Long Linear Runs.

LED: Samsung LED Chips, 2700-5000K, Dynamic White and RGBW Available, 80 CRI (90 Optional)

OPTICAL: Direct Illumination, Beam Angle 106°

CONSTRUCTION: Waterproof - IP66, IK10 Impact Rating, High Grade Aluminum Extrusion 3.58x3.58", Integral Driver, Powder Coat Finish.

* 5-year warranty, 50,000 hour rated lifespan



Model #	Length	Wattage	Distribution	Lumen Output
TechoLED-IP-D-4-45-30-D	4 ft	45 W	Direct	4857lm (at 3000K)
TechoLED-IP-D-8-90-30-D	8 ft	90 W	Direct	9713lm (at 3000K)

Ordering Guide

1	2	3	4	5	6	7	8	9	10
---	---	---	---	---	---	---	---	---	----

1-FIXTURE ID

TechoLED-IP

2-DISTRIBUTION

Direct

3-LENGTH

4 - 4 ft
8 - 8 ft
C - Custom

4-WATTAGE

Direct
45 - 45W (4857lm)
90 - 90W (9713lm)
C - Custom Wattage/Lumen Output

5-COLOR TEMPERATURE

27 - 2700K
30 - 3000K
35 - 3500K
40 - 4000K
50 - 5000K
D - Dynamic/Tunable White
RGB - RGB

6-VOLTAGE

U - Universal
110-277V
HV - 347V

7-FINISH

S - Silver
W - White
B - Black
C - C (RAL#)

8-MOUNTING

P - Pendant
S - Surface Mount
R - Recessed
W - Wall Mounted

9-DRIVER OPTIONS

D - 0-10V Dimming
DA - Dali
LDE1 - Lutron Hi-lume 1% EcoSystem, Soft-on, Fade-to-Black dimming

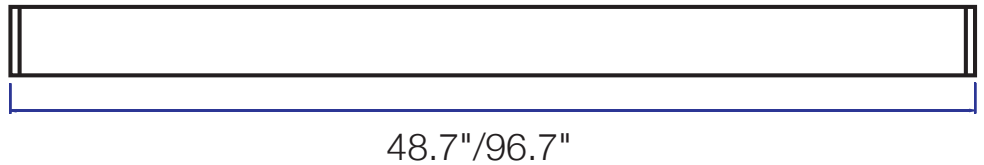
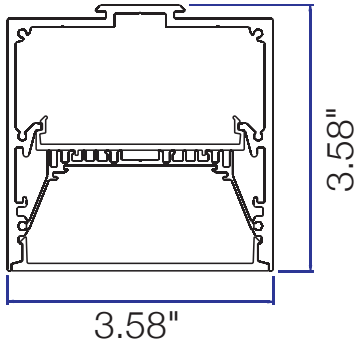
10-OPTIONS

DFCSJ-OEM-RF - Lutron Vive In-Fixture control (RF only)
FCJ/FCJS-ECO - Lutron wireless PowPak (EcoSystem)
FCJ/FCJS-010 - Lutron RF PowPak (0-10V)
DFCSJ-OEM-OCC - Lutron Vive In-Fixture control (with daylight & occ/vac sensors)

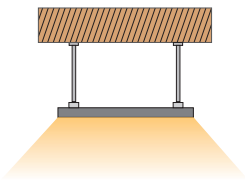
8-OPTIONS (CONT.)

EM - Emergency Battery Backup (remote)
M - Motion Sensor (remote)
BM - Bluetooth Mesh Smart Wireless Control by BubblyNet

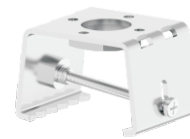
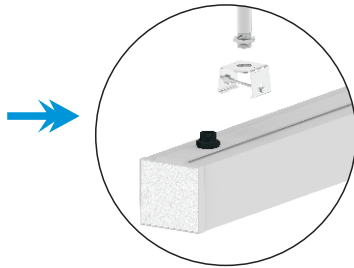
Project:	Type:
Date:	Comments:



Accessories and installation



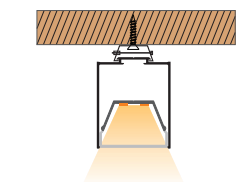
Pendant



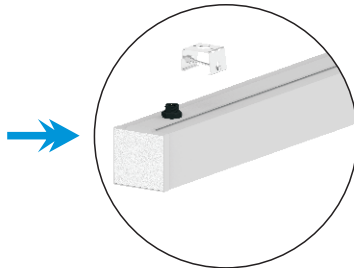
IP-PT



IP-TAIL



Surface Mounted

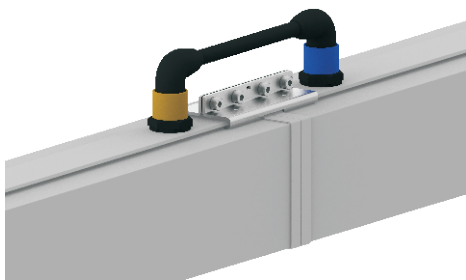


IP-SM



IP-TAIL

Continuous run



IP-LR



IP-LRAC

As we continue to innovate and improve our products, we reserve the right to edit, modify, and change our technical documentation.