

Project:	Type:
Date:	Comments:

GENERAL: Pendant, Indoor, Philips Xitanium Driver

LED: Samsung LED Chips, 3000k/4000k/5000k, 80 ≤ CRI, L80/60000h

OPTICAL: Direct Illumination, Beam Angle 110°, UGR ≤ 19

CONSTRUCTION: Aluminum, PMMA Diffuser

* 5-year warranty, 50,000 hour rated lifespan, IP40 (indoor). Custom size, lumen output and color temperature available.



Model #	Wattage	Output Voltage	Current	Flux(lm)	Size (inches)	Intelligent Control	Finish
TechoLED-BPE-0112	23 W	33 V	700mA	3100lm	34.21x1.88x3.54"	Non/1-10V/Dali	Silver/White/Black
TechoLED-BPE-0113	32 W	46 V	700mA	4400lm	44.44x1.88x3.54"	Non/1-10V/Dali	Silver/White/Black
TechoLED-BPE-0114	39 W	28 V	1050mA	5200lm	57.83x1.88x3.54"	Non/1-10V/Dali	Silver/White/Black
TechoLED-BPE-0115	32 W	46 V	700mA	4400lm	48x1.88x3.54"	Non/1-10V/Dali	Silver/White/Black

Ordering Guide



1-FIXTURE ID

BPE-021

2-LENGTH

34 - 34"
44 - 44"
48 - 48"
57 - 57"

C - Custom
(specify length)

3-COLOR TEMP

27 - 2700K
30 - 3000K
35 - 3500K
40 - 4000K
50 - 5000K
D - Dynamic/
Tunable White

4-VOLTAGE

U - Universal
(120/277V)

5-DRIVER (INTEGRAL)

P - Philips Xitanium Series
(standard)
M - MeanWell
O - Other

6-FINISH

S - Silver
W - White
C - Custom Color (RAL#)

7-MOUNTING

AC - Aircraft Cable (50")

8-OPTICS

SD - Standard Diffuser

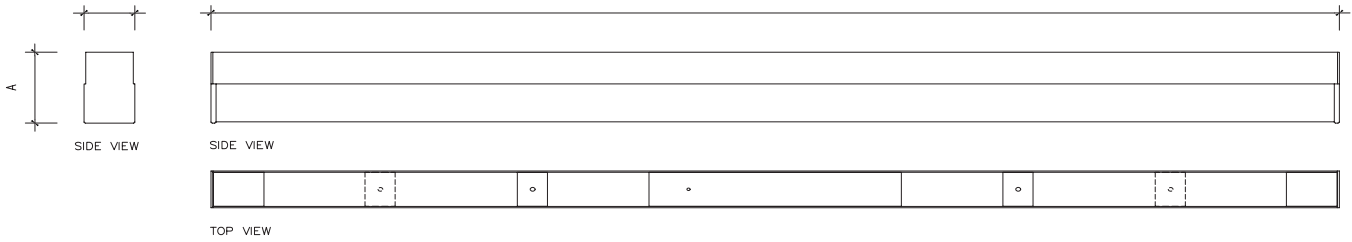
9-OPTIONS

D - 0-10V Dimming
DA - Dali
M - Motion Sensor (remote)

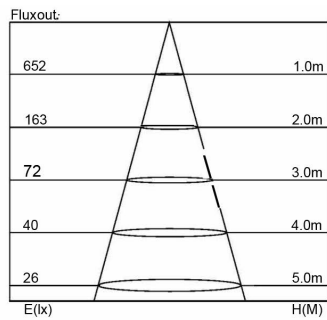
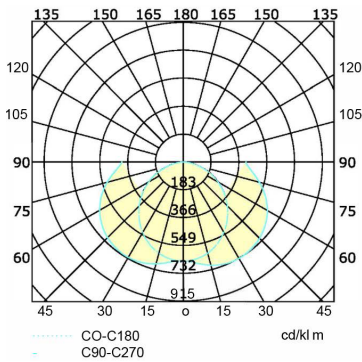
10-EMERGENCY

EM - Emergency Battery
Backup, 90 minutes

Project:	Type:
Date:	Comments:



FIXTURE ID	A	B	C
BPE-0112	3.54"	1.88"	34.21"
BPE-0113	3.54"	1.88"	44.44"
BPE-0114	3.54"	1.88"	57.83"
BPE-0115	3.54"	1.88"	48"



Accessories

FP-006	Ceiling Suspension Wire Member
FP-007	Wire Clamp
FP-009	Power Cable Junction Box